

e-future PYP Readers

LEVEL 1-11

Where Does the Seed Go?



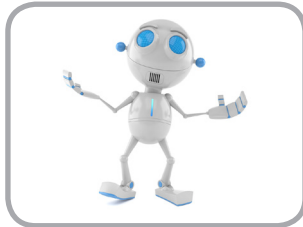
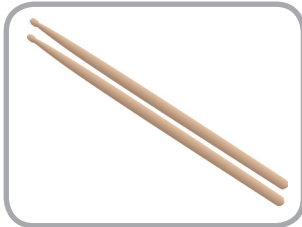
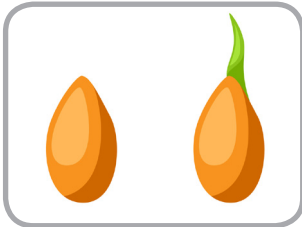
Edward Zrudlo

A Write the correct word for each picture.

robot	drumsticks	ramp	bean
drummer	roots	reach	crown



1. ramp 2. drummer 3. roots 4. crown



5. bean 6. drumsticks 7. robot 8. reach

B Write the synonym for the given word. Change the form if needed.

amazing	silence	pleased	develop
---------	---------	---------	---------

1. Ms. Gonzalez smiled and looked pleased.
happy

2. To germinate means to change and develop.
grow

3. Turning into a robot would be a(n) amazing change!
surprising

4. The teacher asked for silence so she could talk.
quiet

C Write the correct word(s) to complete the sentence.

until recess anymore once then just

1. The baby developed into a little girl. And then the little girl grew into a woman
2. We can't plant the seeds yet. We have to wait until recess.
3. "I don't see the seed anymore," said Ha Na.
4. Once you were babies, but then you became children.
5. The children were banging the drums they had just made.

D Write sentences using *if*.

if: indirect questions

You can use **if** to talk about a yes/no question someone asked.

NOTE: The word order after *if* is like a statement, not like a question.

- "Would you like to plant your bean seeds in a special garden?" the workmen asked us.
→ The workmen asked us if we would like to plant our bean seeds in a special garden.
~~The workmen asked if would we like to plant...~~
- "Do seeds have rules?" she asked.
→ She asked if seeds have rules.
~~She asked if do seeds have rules.~~

1. "Would you like some juice?" he asked me.
→ He asked me if I would like some juice.
2. "Do dolphins have ears?" she asked.
→ She asked if dolphins have ears.
3. "Is there a bus stop near here?" they asked.
→ They asked if there is a bus stop near here.

A Choose the best answers.

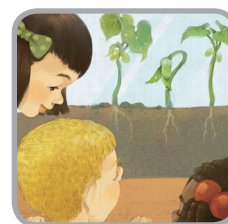
1. Where are the beans growing?

- ☒ a. In a glass box
- b. In a special garden
- c. At Ms. Gonzalez's house



2. What do roots do?

- a. They make the plant look pretty.
- b. They make food for the plant.
- ☒ c. They get water for the plant.



3. Which is true about the seeds?

- a. They don't follow any rules.
- b. They are sick from germs.
- ☒ c. They don't look like seeds anymore.



B Circle T for true or F for false.

1. The class planted the seeds today.

T / ☒ F

2. The bean seeds have germinated.

☒ T / F

3. Both people and plants grow and change.

☒ T / F

4. Workmen are planting beans in the playground.

T / ☒ F

5. The class is going to draw now.

☒ T / F

C Complete the answers to the questions.

1. What does Mika wish sometimes? (p. 4)

Sometimes she wishes she had

a wheelchair.



2. What does Ha Na want to become? (p. 9)

A princess with a pink crown.



3. What does Carlos want to change into? (p. 10)

A car that changes into a robot.



4. What are they going to draw now? (p. 14)

They're going to draw how

bean seeds germinate.



D Complete the summary with the correct words.

explains leaves beans garden people rules change

Ms. Gonzalez and the children check on the 1. beans they planted a while ago. The seeds don't look like seeds anymore. They have 2. leaves and roots.

Ms. Gonzalez 3. explains that they have germinated. To germinate means to grow and 4. change. She says that 5.

people grow too. The children talk about what they would like to change into. Ms. Gonzalez tells them that seeds have 6.

rules: Human seeds become humans only. At recess, they are going to plant the beans in a special 7. garden.