

**e-future PYP Readers**

**LEVEL 1-11**

# Where Does the Seed Go?



**Edward Zrudlo**

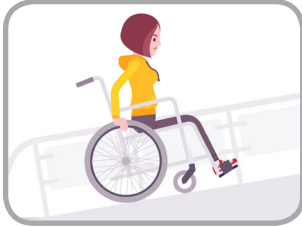
**A** Write the correct word for each picture.

robot  
drummer

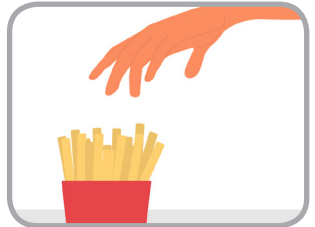
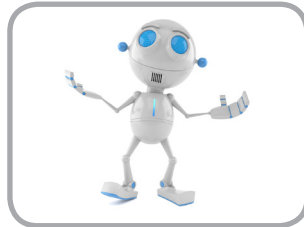
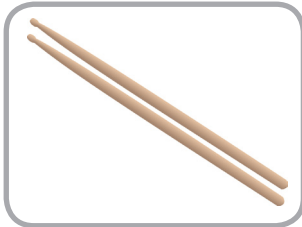
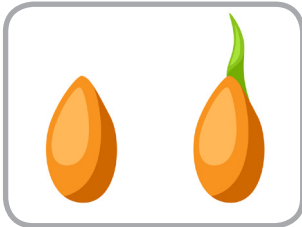
drumsticks  
roots

ramp  
reach

bean  
crown



1. \_\_\_\_\_ 2. \_\_\_\_\_ 3. \_\_\_\_\_ 4. \_\_\_\_\_



5. \_\_\_\_\_ 6. \_\_\_\_\_ 7. \_\_\_\_\_ 8. \_\_\_\_\_

**B** Write the synonym for the given word. Change the form if needed.

amazing

silence

pleased

develop

1. Ms. Gonzalez smiled and looked \_\_\_\_\_ .  
happy

2. To germinate means to change and \_\_\_\_\_ .  
grow

3. Turning into a robot would be a(n) \_\_\_\_\_ change!  
surprising

4. The teacher asked for \_\_\_\_\_ so she could talk.  
quiet

**C Write the correct word(s) to complete the sentence.**

until recess      anymore      once      then      just

1. The baby developed into a little girl. And \_\_\_\_\_ the little girl grew into a woman
2. We can't plant the seeds yet. We have to wait \_\_\_\_\_ .
3. "I don't see the seed \_\_\_\_\_," said Ha Na.
4. \_\_\_\_\_ you were babies, but then you became children.
5. The children were banging the drums they had \_\_\_\_\_ made.

**D Write sentences using *if*.**

***if: indirect questions***

You can use ***if*** to talk about a yes/no question someone asked.

NOTE: The word order after ***if*** is like a statement, not like a question.

- "Would you like to plant your bean seeds in a special garden?" the workmen asked us.  
→ The workmen asked us **if we would like to plant** our bean seeds in a special garden.  
~~The workmen asked if would we like to plant...~~
- "Do seeds have rules?" she asked.  
→ She asked **if seeds have** rules.  
~~She asked if do seeds have rules.~~

1. "Would you like some juice?" he asked me.

→ \_\_\_\_\_ .

2. "Do dolphins have ears?" she asked.

→ \_\_\_\_\_ .

3. "Is there a bus stop near here?" they asked.

→ \_\_\_\_\_ .

**A Choose the best answers.**

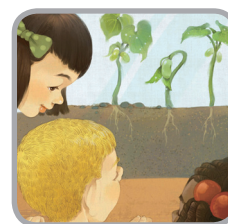
1. Where are the beans growing?

- a. In a glass box
- b. In a special garden
- c. At Ms. Gonzalez's house



2. What do roots do?

- a. They make the plant look pretty.
- b. They make food for the plant.
- c. They get water for the plant.



3. Which is true about the seeds?

- a. They don't follow any rules.
- b. They are sick from germs.
- c. They don't look like seeds anymore.



**B Circle T for true or F for false.**

1. The class planted the seeds today.

T / F

2. The bean seeds have germinated.

T / F

3. Both people and plants grow and change.

T / F

4. Workmen are planting beans in the playground.

T / F

5. The class is going to draw now.

T / F

## **C** Complete the answers to the questions.

1. What does Mika wish sometimes? (p. 4)

Sometimes she wishes she had

\_\_\_\_\_.



2. What does Ha Na want to become? (p. 9)

A \_\_\_\_\_ with a \_\_\_\_\_.



3. What does Carlos want to change into? (p. 10)

A car that \_\_\_\_\_.



4. What are they going to draw now? (p. 14)

They're going to draw how

\_\_\_\_\_.



## **D** Complete the summary with the correct words.

explains leaves beans garden people rules change

Ms. Gonzalez and the children check on the 1. \_\_\_\_\_ they planted a while ago. The seeds don't look like seeds anymore. They have 2. \_\_\_\_\_ and roots.

Ms. Gonzalez 3. \_\_\_\_\_ that they have germinated. To germinate means to grow and 4. \_\_\_\_\_. She says that 5.

\_\_\_\_\_ grow too. The children talk about what they would like to change into. Ms. Gonzalez tells them that seeds have 6.

\_\_\_\_\_: Human seeds become humans only. At recess, they are going to plant the beans in a special 7. \_\_\_\_\_.