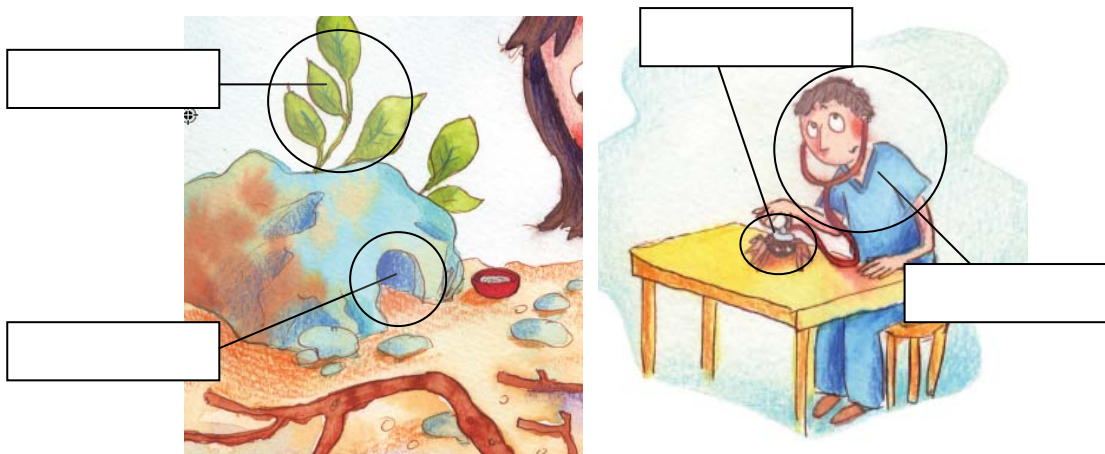


Title: Meet Tina Tarantula

Word Study

A. Read and write.



Word Box

cave doctor plant tarantula




B. Fill in the blanks using the words.

cave hiding touch wrong smiled

1. "We won't _____ Tina Tarantula."
to put your hands or fingers on something
2. Something was _____.
not in the right state; not healthy
3. We saw Tina move inside her _____.
a large opening in the ground
4. "She must be _____," I said.
to go to a place where you can't be found
5. I think Tina _____.
the way your face shows that you are happy






Reading Comprehension

C. Write the missing words in each sentence.

1.	into, touch, hurt
	<p>I looked _____ Tina's home.</p> <p>"Will she _____ us?" Ian asked.</p> <p>"No, but we won't _____ her."</p>
2.	pointed, skin, behind
	<p>Ian saw something _____ the plant.</p> <p>He _____ at it.</p> <p>It was Tina's old _____.</p>
3.	smiled, head, cave
	<p>Tina moved inside her _____.</p> <p>Her _____ came out.</p> <p>I think she _____.</p>

D. Read and write the correct letter.

- "It is just her old skin!"
- I looked into Tina's home.
- I called my friend Ian.
- "Maybe she needs to see a doctor," Ian said.
- "Maybe she's behind that plant."

A 	B 	C 	D 	E 
--	--	--	---	--