

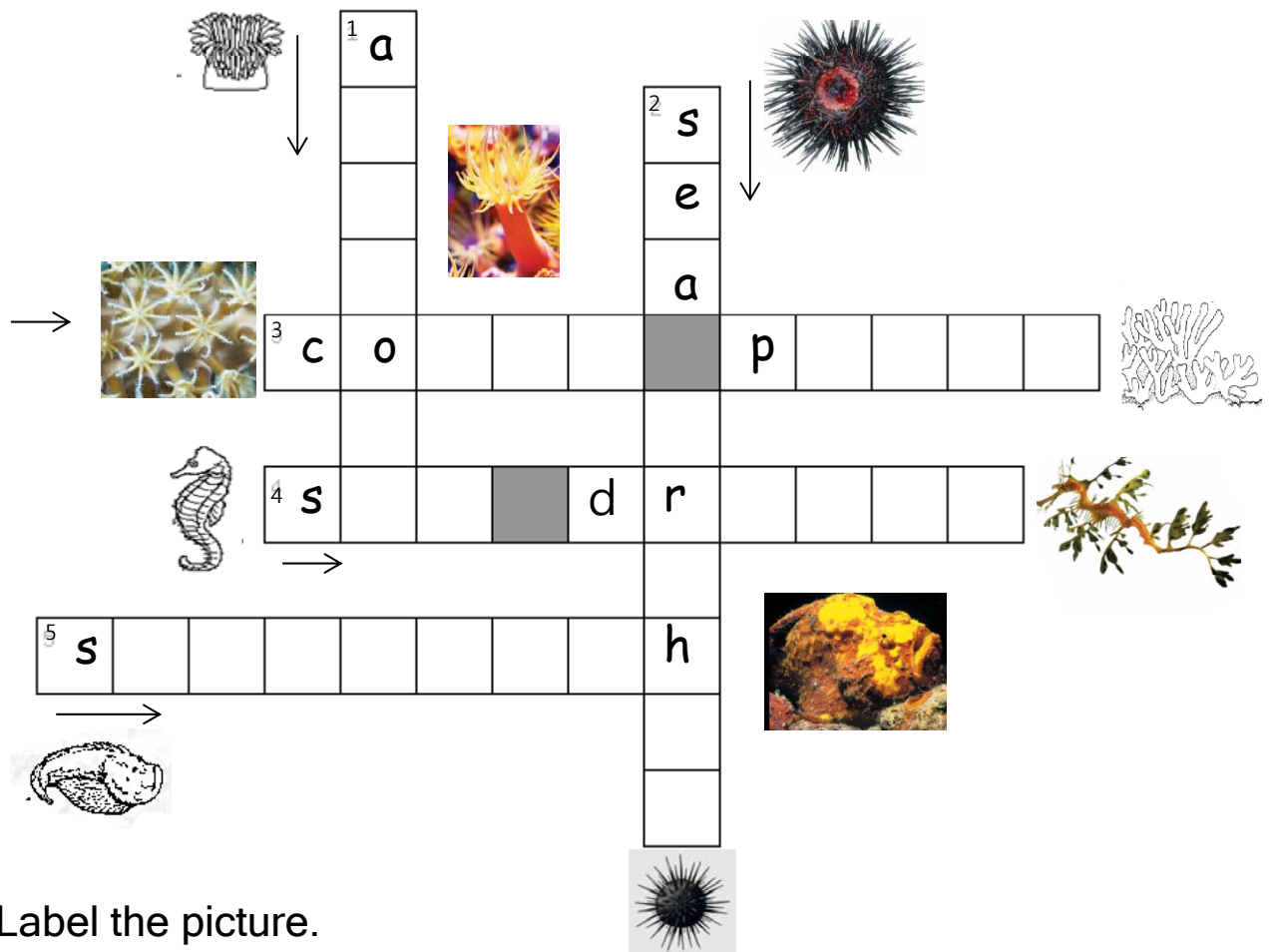
**Alpha Level 4**

## **What am I? Weird and Wonderful Sea Animals**



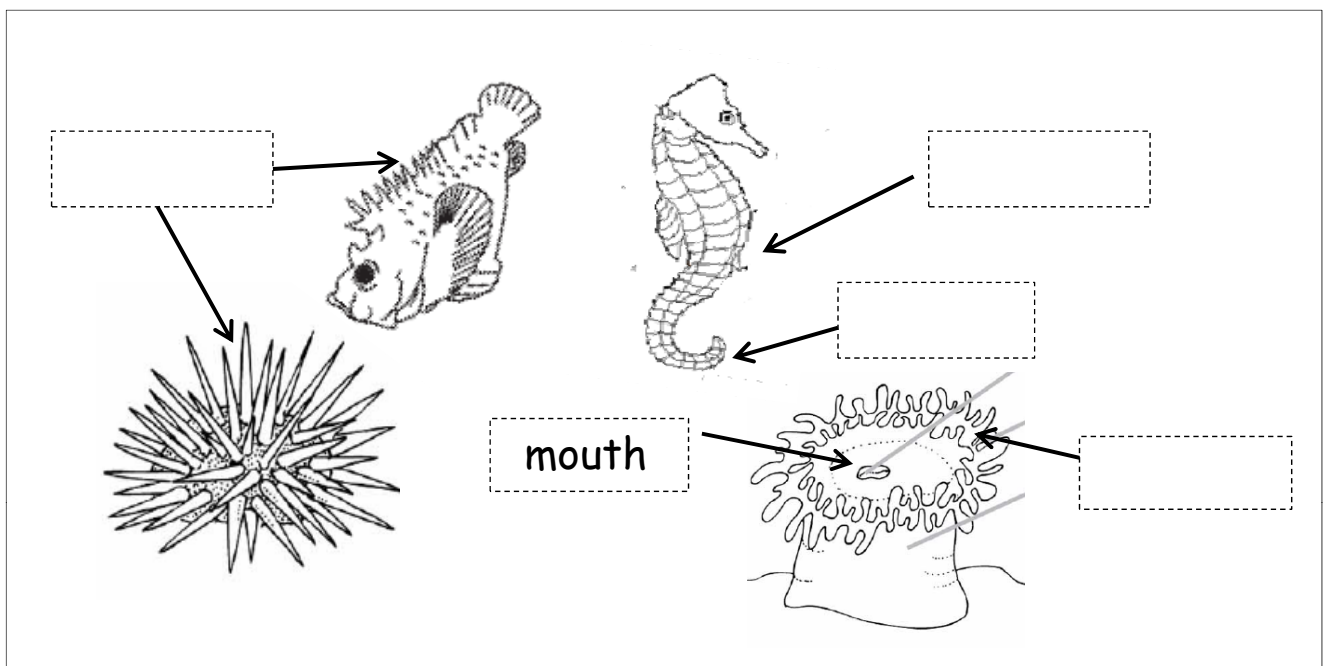
## Word Study

A. Solve the crossword puzzle below.



B. Label the picture.

mouth, pouch, tentacle, spine, tail



## Word Study

C. Complete the sentence using the words in the box.

hatch, float, protect, hide

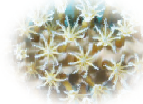
- 1) Leafy sea dragons \_\_\_\_\_ from eggs.

*meaning : to come out of an egg*



- 2) When tiny sea animals \_\_\_\_\_ past, coral polyps sting and eat sea animals.

*meaning :to be carried or moved by moving water*

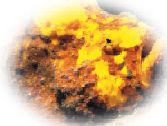


- 3) The sea urchin is covered with spines to \_\_\_\_\_ from enemies.



*meaning: to keep something from being harmed.*

- 4) The stone fish can stay very still and \_\_\_\_\_ in the sand or mud.



*meaning: to cover not to be seen easily*

D. Use the **adjectives** from the word box to complete the sentence below.

Adjective is a word that describes a noun

sharp, strong, lumpy, tiny, poisonous

1. The sea urchin has s spines on its shell.

It eats t sea plants.



2. The stonefish is not pretty. It has brown and l skin.

It has p spines to protect from animals.

Its' poison is s enough to kill people.



## Comprehension

### A. Answer the following questions.

1. What is the story mainly about?

The story is about \_\_\_\_\_.  
sea animals / sea plants

2. Which animal has many tentacles, eats tiny sea animals, and makes up coral reef? (page 1~5)

\_\_\_\_\_.

3. Which animal looks like a seaweed, has a long mouth to suck up food? (page 6~9)

\_\_\_\_\_.

4. Which animal looks like a rock, has spines along its back? (page 10 ~13)

\_\_\_\_\_.

### B. Circle “Yes” or “No” after the following statements.

1. Sea anemones are plants. Yes / No  
(page 14)

2. Sea urchins hide during the day and come out at night to feed.  
(page 20)

Yes / No

3. Stonefish looks like a rock so its appearance helps it hide among rocks. (page 10 ~13)

Yes / No

4. When sea anemones are in danger, they open up to protect themselves. (page 14~17)

Yes / No

## Comprehension

### C. Summarize the interesting facts of sea animals

Circle the right words for each weird animal.

**Coral polyp**

live in : sea / land

eat: tiny animals  
plants

Interesting Facts:

- tentacles
- hide in the sand
- Skeletons make up coral reef.

**Leafy sea dragon**

live in : sea / land

eat: sea animals  
plants

Interesting Facts:

- look like seaweed
- long mouth to suck up food.
- They are not a fish.

**Stone fish**

live in : sea / land

eat: sea animals  
plants

Interesting Facts:

- poisonous spines
- look like flowers
- hide in the sand or among rocks

**Sea anemone**

live in: sea / land

eat: tiny animals / tiny sea plants

Interesting Facts

- look like dragons
- stinging tentacles
- swallow food when they catch

**Sea urchin**

live in: sea / land

eat: tiny animals / tiny sea plants

Interesting Facts

- sharp spines
- feet to move
- hunt food during a day

### D. Write and Speak

What other weird sea animals do you like? Use the phrases and write, then talk about them.

Today, I read about \_\_\_\_\_.

They have wonderful and weird characteristics.

My favorite sea animal is \_\_\_\_\_.

It lives in the \_\_\_\_\_ sea. It has \_\_\_\_\_.

It eats \_\_\_\_\_.

