

Alpha Level 4

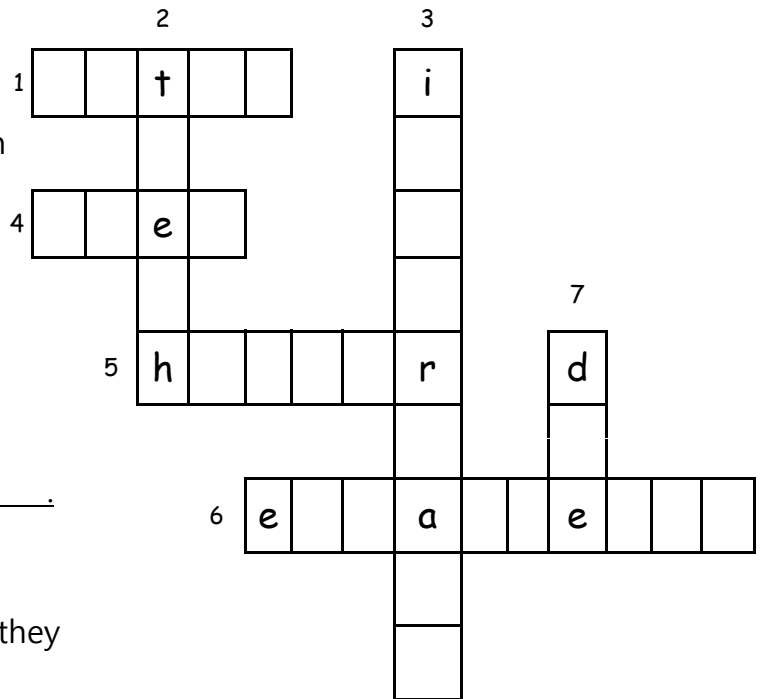
# Sharks



**A Solve the crossword puzzle below.**

**Across →**

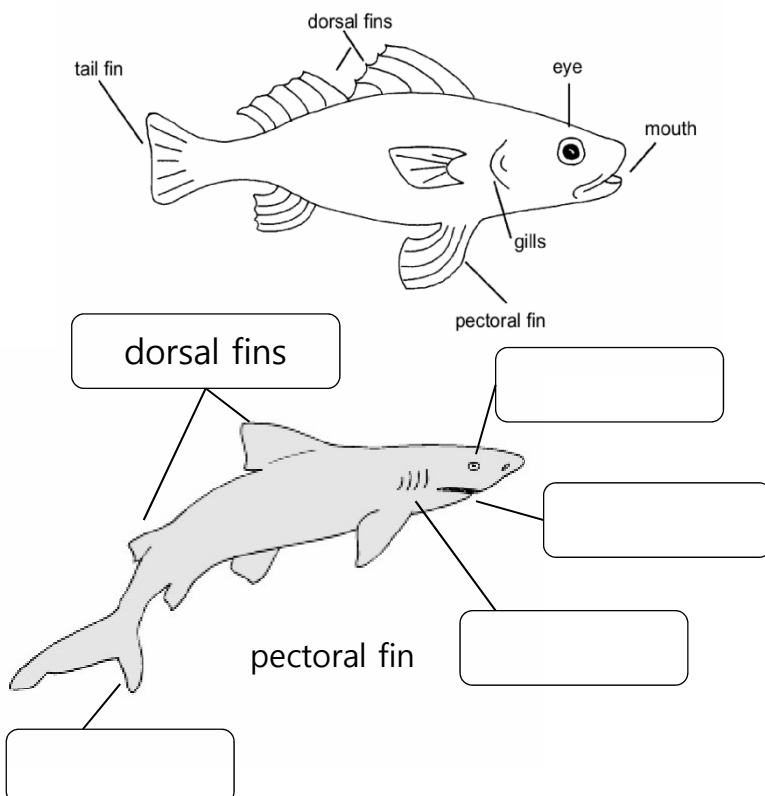
1. Most baby sharks \_\_\_\_\_ from eggs.
4. Sharks kill their \_\_\_\_\_.
5. The hammerhead shark has a head in the shape of a \_\_\_\_\_.
6. Many sharks are \_\_\_\_\_.  
People kill sharks for food.



**Down ↓**

2. Sharks have lots of sharp \_\_\_\_\_.
3. Sharks are \_\_\_\_\_ part of the ocean.
7. Many sharks also \_\_\_\_\_ when they get caught in fishing nets.

**B Look at the part of fish and label the part of the shark.**



**What is a Fish?**

1. A \_\_\_\_\_ has a backbone.
2. It uses \_\_\_\_\_ to get oxygen from the water.
3. A fish has \_\_\_\_\_ to help it move.
4. It has \_\_\_\_\_ covering its body

gills fins fish scales

**C Write the correct word to complete the sentence.**

1. Most sharks are \_\_\_\_\_.
2. Whale sharks grow **as** \_\_\_\_\_ **as** a school bus.
3. Sharks hunt old or sick animals because they are \_\_\_\_\_ to catch.
4. Baby sharks **are** \_\_\_\_\_ pup.
5. Many shark die when they **get** \_\_\_\_\_ in fishing nets.
6. There are many **different** \_\_\_\_\_ **of** sharks.
7. Sharks pups can **look** \_\_\_\_\_ themselves as soon as they hatch.

long  
caught  
called  
sorts  
cold-blooded  
easy  
after

**D Read the statement.  
Then complete the sentence using as~as pattern.**

**Comparison : as adjective as**

1. Most sharks are long.
2. Bicycle is long too.

Most sharks grow **as long as** a bicycle.

1. School bus is long. Whale sharks are long too.  
Whale sharks grow \_\_\_\_\_ a school bus. (long)
2. Tony is 10 years old. Jane is 10 years old, too.  
Tony is \_\_\_\_\_ as Jane (old)
3. I have two cookies. David has two cookies, too  
I have \_\_\_\_\_ David does. (many)

**A Answer the following questions.**

1. The main purpose of the book is \_\_\_\_\_.  
a) to explain many kinds of sharks  
b) to give facts and details about sharks  
c) to show us how sharks hunt preys
2. What does a hammerhead shark look like? (pg. 6)  
a) It looks like a hammer.  
b) It looks like a rug.  
c) It looks like a leopard.
3. What do sharks eat? (p.p. 10~11)  
a) plants                      b) other animals                      c) plants and animals
4. What are the baby sharks called? (pg.13)  
They are called \_\_\_\_\_.
5. What is NOT true about sharks in danger? (p.p. 14~15)  
a) Many sharks are hunted for food by people.  
b) Many sharks are killed by getting caught in fishing net.  
c) Many sharks die of hunger.

**B Read and circle "T" for true or "F" for false.**

- 1) All sharks attack people.
- 2) Sharks kill and eat old and sick animals in the sea.
- 3) Most sharks lay eggs.
- 4) Baby sharks hunt in their way as soon as they hatch.
- 5) All sharks are big and scary.

T / F

T / F

T / F

T / F

T / F

**C Complete the chart for "Shark".**

**Main Idea**

Sharks are \_\_\_\_\_ fish.

Most sharks are \_\_\_\_\_.

**Details**

What do they look like? (size)

Some are

Where does it live?

What do they eat?

Why are sharks endangered?

They are

in the sea

cold-blooded

hunted by  
people

large

sick and old  
animals

some are big  
some are small

**D Write the a science report about sharks.**

**SAVE SHARKS**

Sharks look scary with \_\_\_\_\_ and their strong jaws.

But sharks are an important part of the ocean.

*Q: Why are sharks important in the ocean?*

They kill \_\_\_\_\_

If they didn't do this, \_\_\_\_\_

*Q: What can we do for sharks?*

(e.g. Kill sharks, Don't be afraid of sharks, Stop hunting sharks for food.  
Don't make the ocean dirty, Save sharks, Take sharks to the zoo.)