

## Alpha Level 2



### Old Cans and Cars



Written by Marilyn Woolley with Ray Sailah  
Photography by Michael Curtain

Word Study

A Write the correct words from the box.

- 1) A large building where machines are used to make goods.

**factory**

- 2) A space in which a very hot fire is made

**furnace**

- 3) A place within which any work is carried on such as gardening and piling.

**yard**

- 4) A machine that makes things smaller.

**mill**

- 5) A long, thin metal bar.

**steel rod**

Word Box ~~yard~~ ~~mill~~ ~~furnace~~ ~~factory~~ ~~steel rod~~

B Read the story again. Label the pictures.



*collected*



**sorted**



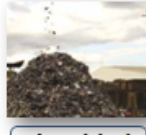
**piled**



**picked up**



**crushed**



**shredded**

Comprehension

C Write the numbers in order.

The crushed and shredded cans and cars are cut into tiny bits of metal. **1**

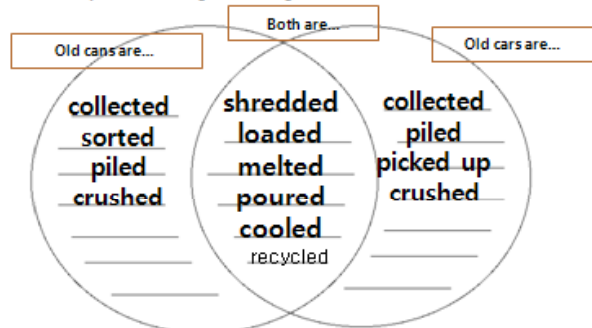
These steel rods are delivered to be made into new things. **4**

The furnace melts the metal and pours it into long blocks. **2**

Then the long blocks are cooled down. **3**



D What happens in the recycling process?  
Complete the diagram using the words from the box.

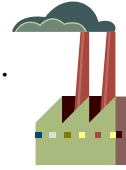


Word Box collected crushed sorted shredded melted loaded poured cooled piled recycled

**A Write the correct words from the box.**

- 1) A large building where machines are used to make goods.

**factory**



- 2) A space in which a very hot fire is made.

**furnace**



- 3) A place within which any work is carried on such as gardening and piling.

**yard**



- 4) A machine that makes things smaller.

**mill**



- 5) A long, thin metal bar.

**steel rod**



Word Box

~~yard~~

~~mill~~

~~furnace~~

~~factory~~

~~steel rod~~

**B**

**Read the story again. Label the pictures.**



*collected*



**sorted**



**piled**



**picked up**



**crushed**



**shredded**

**C Write the numbers in order.**

The crushed and shredded cans and cars are cut into tiny bits of metal.

1

These steel rods are deliver to be made into new things.

4

The furnace melts the metal and poured into long blocks.

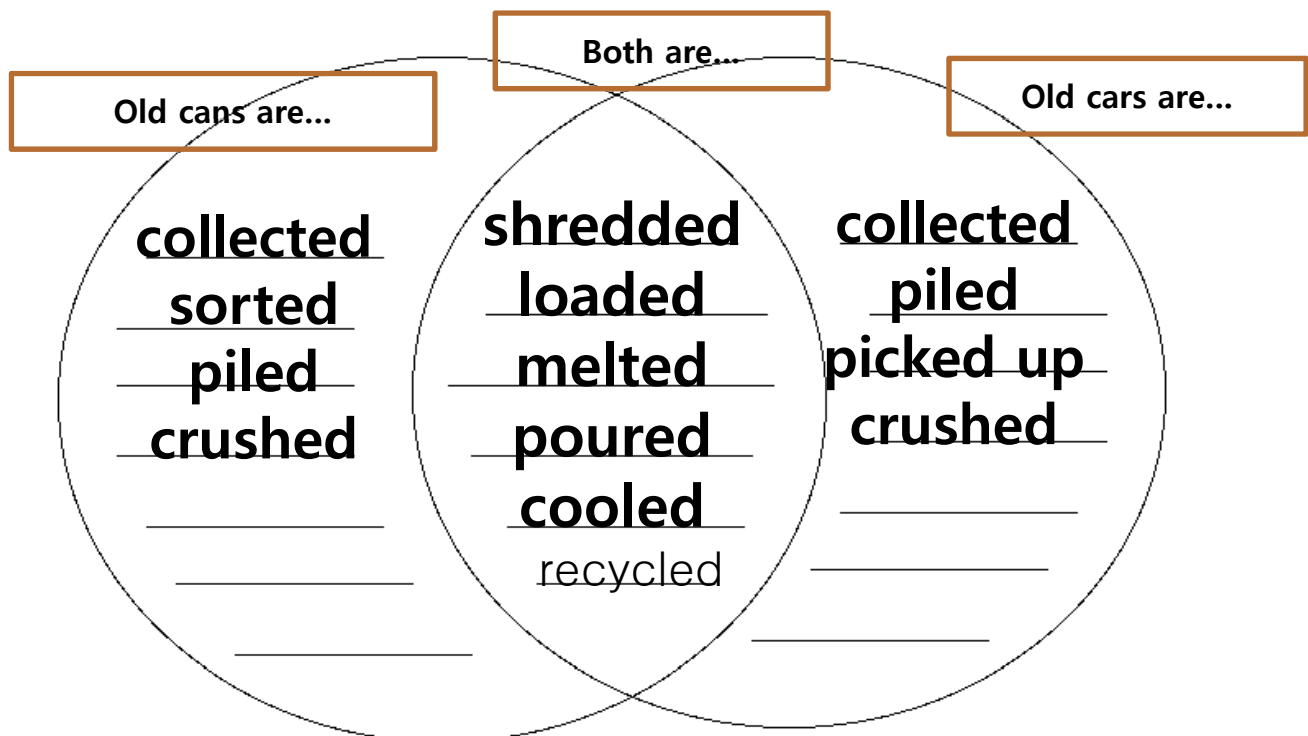
2

Then the long blocks are cooled down.

3



**D What happens in the recycling process?  
Complete the diagram using the words from the box.**



**Word Box**

collected   crushed   sorted   shredded   melted  
poured   cooled   piled   recycled   loaded