

Level 2. Animal Close-ups

Alpha Readers

Animal Close-ups



Written by Anna Porter

A Write the correct words in the blanks.

Word Box

poison

straw

tail

jaw

tongue

sting

1



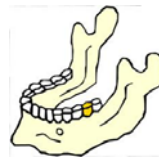
2



3



4



5



6



B Circle the words in the Word Box.

s	b	u	l	l	a	n	t	
a	p	r	b	c	e	g	i	k
o	t	i	b	e	e	t	l	e
u	w	m	d	x	u	z	e	n
m	q	o	r	e	s	v	y	x
b	u	t	t	e	r	f	l	y
c	e	h	f	i	j	a	m	n
v	s	c	o	r	p	i	o	n

Word Box



beetle



butterfly



~~fly~~



spider



moth

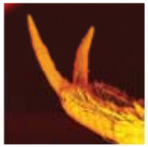


scorpion



bull ant

C Write the part and match to the animal.



foot













Some spiders have eight eyes on their head.



A butterfly can roll up its tongue.



A beetle uses its feet to help it swim.



A scorpion has poison its tail.



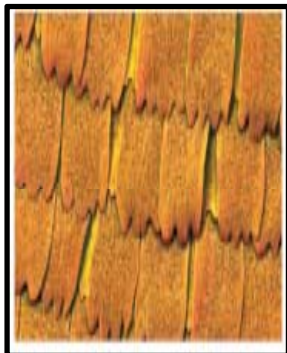
A fly's eye is made up of many tiny parts.



A bull ant's mouth is at the front of its head.

D Unscramble the words to complete the science report.

Science Report



moth's is a This . wing

wings Moth two pairs of a has

uses It its wings fly to .