

Level 2. Animal Close-ups

# Alpha Readers

## Animal Close-ups



Written by Anna Porter

A Write the correct words in the blanks.

Word Box

poison

straw

tail

jaw

tongue

sting

1



tongue

2



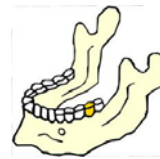
poison

3



sting

4



jaw

5



tail

6



straw

B Circle the words in the word box.

s b u l l a n t  
a p r b c e g i k  
o t i b e e t l e  
u w m d x u z e n  
m q o r e s v y x  
b u t t e r f l y  
c e h f i j a m n  
v s c o r p i o n

Word Box



~~beetle~~



~~butterfly~~



~~fly~~



~~spider~~



~~moth~~

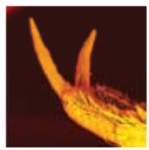


~~scorpion~~



~~bull ant~~

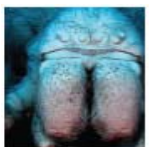
**C** Write the part and match to the animal.



foot



mouth



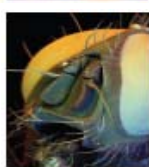
head



tail



tongue



eye



Some spiders have eight eyes on their head.



A butterfly can roll up its tongue.



A beetle uses its feet to help it swim.



A scorpion has poison its tail.



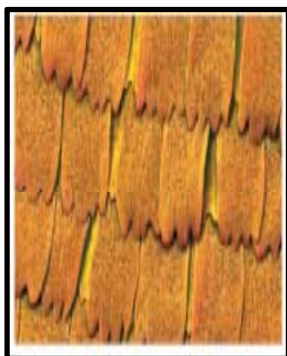
A fly's eye is made up of many tiny parts.



A bull ant's mouth is at the front of its head.

**D** Unscramble the words to complete the science report.

### Science Report



moth's is a This . wing

**This is a moth's wing.**

wings Moth two pairs of a has

**Moth has a two pairs of wings.**

uses It its wings fly to .

**It uses its wings to fly.**